



TEMPLE NER AMI
515 Temple Avenue
Camarillo, CA 93010

“The Temple on Temple Ave.”
is affiliated with the
Union for Reform Judaism

Office Hours:

Mon.- Fri., 9am-2pm

Telephone

(805) 388-3824

Fax:

(805) 383-1011

Internet:

TempleNerAmi.org

BOARD OF DIRECTORS

Executive Leadership

Team

Dan Harris, President

Sarene Wallace, VP

Nadine Frankel, VP

Secretary

Marc Grossmann

Treasurer

Saul Lessler

Board Members

Shari Brody

Arla Crane

Gary Goltz

Larry Kleinman

Gary Lieb

Harriet Lit

Rabbi Michael Lotker

Steve Moore

Dennis Sookikian

Ann Levin-Sookikian

Lew & Joan Stone

Come Home With Me to Israel

Message from Rabbi Mike Lotker

Those of you who were at Yom Kippur services heard me speak about the significance of Israel to Jews and Judaism. Judaism has always understood that the Holy Land has been a central element of our covenant with God and that every Jew is a member of *Am Yisrael*, the People Israel.



I have traveled to Israel many times, working for Israeli companies during my physicist days, as a tourist, living in Jerusalem for my first year of rabbinic school and on two Temple Ner Ami trips.. Simply put, if you have any attachment to Judaism at all (and you do since you are reading this article), there is literally no place in the world like Israel. It is our ancestral home and it is our current home. The Bible comes alive in Israel with every step and every stone. Therefore, as you heard on Yom Kippur, I am announcing that I will be leading a trip to Israel departing Wednesday, May 18 and returning Sunday, May 29, 2011.

We plan to be staying in Tel Aviv, Jerusalem and 2 nights on a kibbutz in the upper Galilee, and to be visiting

Caesarea, , Zippori, Tel Dan, the Golan, Safed, all the sites in Jerusalem including the Western Wall tunnels, Erev Shabbat at the Southern Steps of the Temple, Masada and the Dead Sea. We will have opportunities to study ancient and mystic texts together at the sites where they were written, visit historic places and modern sites, and spend Shabbat in

Jerusalem. We will be in private, secure motor coaches with our own driver and guides. An additional goal of mine is to explore the spiritual and the intellectual roots of Judaism, Christianity and Islam.

Some of the details remained to be worked out but I am very excited about this trip. For cost details, see the flyer in the Megillah and for more information, check out the web site under “Israel Trip” (where you can also see the travel blog and photos from our last trip). So far, we have a handful of people who have requested more information. I hope that you will add your name to the list by contacting me. Of course, I will be delighted to answer any questions and will be holding an informational meeting soon.

NEXT YEAR IN JERUSALEM!!!

Movie Night!

Saturday - Sept. 24, 6:30 pm

YENTL

Starring Barbra Streisand



SPOTLIGHT ON VOLUNTEERS

from Shari Brody

What a pleasure it is to write this article!

Although I was away for the High Holy Days, I heard such wonderful comments about our services. Many people worked together in a variety of ways to create a warm, inviting religious atmosphere.

Many thanks to Rabbi Michael Lotker and Student Rabbi Lisa Bock for their tireless efforts, knowledge and sense of humor.

Cantorial Soloist Karen Dworsky whose voice is a pleasure to listen to, worked with pianist director, Danny Newman Lessler and choir manager Sharon Spielman to coordinate and create our new choir which added to the services. The choir members: Harriet Lit, Avram Kohls, Lenny Lowenschuss, Saul Lessler, Julia Newman, Chana Kreitzer, Kim Hoenig, Shoshana Steinberg and Jeffrey Lee Steinberg are greatly appreciated for their flexibility, dedication and lovely harmonizing.

Steve Moore, Chairman of the Religious Practices Committee and talented chef, spent hours cutting

and coring apples for the traditional sweet apple & honey treat.

Naomi Brill is our kitchen maven who always helps with setting up and serving. Jean Shev assisted in this effort as well.

Thanks to Rose Siela who thoughtfully drove a shuttle to pick-up and drop-off those needing rides to services.

We appreciate these Temple members who volunteered: Alison and Marc Grossman, Marlene Votion, Jodi Spitzer, Gina Burstein, Gary Goltz, Sarene Wallace, Nadine Frankel, Dan Harris, Jessica Budin, Ann Sookikian and Dale and Bobbi Jacobs, two new members.

Our gratitude to Mark Malloy, Julia Newman and Kalia Kaden who keep things running smoothly at our Temple and can't be thanked enough.

I am writing this article from Yellowstone National Park and it is my sincere hope that I have not missed thanking anyone who pitched in to help. If I did, please accept my apology, as it was unintentional.

Thanks to all!

Dedicated Beth Shalom Lawn Section



PERSONAL CHOICES

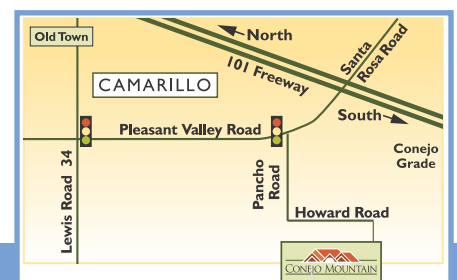
Expressed beforehand will relieve your loved ones from making difficult decisions at the time of need.



Trust our professional staff to handle all the details with respect and tradition.
Alan Ducker, Advance Planning Specialist, direct: 805-258-3697



24 hrs. 805-482-1959
2052 Howard Road
Camarillo, CA 93012
www.conejomountain.com



Visit our beautiful property, 3 miles South of the 101 freeway in Camarillo.



TEMPLE CONTACTS

Office Hours

Mon-Fri. 9am-2pm

Rabbi

Michael Lotker
rabbi@
templenerami.org

Student Rabbi

Lisa Bock
studentrabbilisa@
templenerami.org

Torah School Principal

Julia Newman
educator@
templenerami.org

Administrator

Mark Malloy
admin@
templenerami.org

Accounting

Kaila Kaden
accounting@
templenerami.org

Cantor

Karen Dworsky
Cantor@
templenerami.org

Choir Leader

Daniel Lessler
Choir@
templenerami.org

Choir Admin.

Sharon Spielman
ChoirAdmin@
templenerami.org

Executive Leadership Team Message

by Sarene Wallace

Friends,

It was wonderful to see so many of you at High Holiday services! As we start 5771, there is a great deal of hope. We hope you enjoyed the emotionally rich services made even lovelier with the addition of our choir. We hope, too, that you connected with old friends and made some new ones. And we hope that we'll see you more often. There are so many interesting, educational, engaging activities that the board is planning this year. We hope you'll come.

We hope for our temple's bright future, which is why in 2008 we had a board retreat in which we created the temple's vision statement (at right). It's a way to define who we are and how we want all people in the community see us. It's this board's vision to continue practicing these 12 traits. Please let us know if we ever fall down on the job. And please join with us in welcoming new faces so that they, too, can see us for who we are.

VISION STATEMENT

Temple Ner Ami is...

- Welcoming (the #1 thing we want the community to know about us)
- A sanctuary for all
- Intimate feeling
- A temple family
- Warm
- Generous
- Flexible
- Affordable
- Providing a quality Jewish education (well-rounded program)
- Unique
- Service to the community
- Not pretentious

Movie Night at the Temple

October 30th 6:30 pm

Joseph and the Amazing Technicolor Dreamcoat

In this filmed adaption of the long-running musical, we see the story of Joseph, son of Jacob. The favoured son, he is betrayed by his jealous brothers and sold into slavery and driven to Egypt. Though beset with adversity, Joseph perseveres through wit and faith and becomes the governor of Egypt, second only to the Pharaoh. This all sets the scene for when he meets his brothers who have come to Egypt to purchase food.





CHEDER CHAPPENINGS

from Julia Newman

Dear Friends,

It is our custom to introduce our teachers and youth advisors at the beginning of the year. Please take time to read about each of these outstanding individuals who make up our faculty. Many of our teachers have been with us for several years—while others are returning or are newcomers. They bring a wealth of experience, knowledge, dedication and enthusiasm.

LISA BOCK is our Student Rabbi. She is studying at the Academy for Jewish Religion, a trans-denominational institution located in Los Angeles near UCLA. Lisa has worked for many years in Outreach, an area of Jewish life which strives to welcome all to Judaism. In her work in Outreach, she has been providing education, special programs, including field trips, workshops on living Jewishly, Interfaith Couples Workshops, Grandparenting Workshops, and Parenting Workshops. Additionally, Lisa is active in educating adults and youngsters towards B'nai Mitzvah. Lisa brings real life experience of balancing a career in business with parenting, and strives to bring holiness and spirituality to all aspects of daily life, and to teach that to children of all ages, whether 9 or 90. Lisa is a graduate of Cal State Northridge, where she earned her degree in Business. Lisa has also earned the designation of Schindler Fellow in Conversion Mentoring, and is also a Schindler Fellow in Interfaith Couples Mentoring.

KAREN DWORSKY has taught every grade of Torah School from Kindergarten to 10th. She has over 35 years experience in Jewish education. . Karen has been a Cantorial Soloist since 1975 and has been Temple Ner Ami's Cantor for 14 years. She has been a tutor for children with English as a second language as well as students with learning disabilities. She holds a degree in Political Science with a minor in Religion and Spanish.

Please take time to read about each of these outstanding individuals who make up our faculty...they bring a wealth of experience, knowledge, dedication and enthusiasm.

AVRAM (Stan) KOHLS has many years and a variety of experiences in Jewish education—ranging from our own Torah School to Jewish youth camps, community centers and counseling at Chabad Drug Rehabilitation. Avram has pursued his great interest in Jewish folklore, music, dance and history. He has continued his education by taking numerous workshops through ADL and the Wiesenthal Center and one summer took a series of classes on the history of Polish-Jewish relations at the Jagellonian University (at Krakow), the 2nd oldest in Europe. He has been a volunteer on a Kibbutz, visited Israel with Rabbi Mike in 2005 and travelled to China in 2009. Avram has a Masters in Education and has been both an elementary school teacher and for 15 years was a high school teacher at the Camarillo State Hospital. In addition to teaching our primary grades, he will be sharing his extensive knowledge of the Holocaust with our 7th grade students. Avram rides a motorcycle to Torah School and has a cat named Fido. He lives in the oldest house in Somis.

GALIA LAPIDOT-BOAZ is a newcomer to Camarillo, having relocated with her family from Israel last December. She's a Mother of 3 young children (which makes her an "expert" in early childhood education). Galia has a Bachelor of Education and teaching diploma in Early Childhood Education, from the Kibbutzim College of Education the department of Creative Education. She has worked for several years in public and private kindergarten settings. Since 2002 she has had a successful private pre-kindergarten (Mishpachton). Galia served in the Israeli Air Force as an officer of an operation room.

Her experience in informal Jewish Education includes: Two consecutive summers as an Israel

Madricha at Camp Moshava of Habonim Dror in Maryland and a year in Cambridge, Massachusetts working in an after-school Hebrew program called Kesher. During weekends and vacations you will surely find Galia with her family on one of the area hiking trails.

SAUL LESSLER returns to us this year as our support teacher—meaning he works wherever he is needed! Some of his assignments this year will include teaching prayer to adults and 6th graders, support teacher for 7th grade, Hebrew tutor and general jack-of-all trades. Saul has a Bachelor of Science in Electrical Engineering and a J.D. He was an electrical engineer for four years and an attorney for twenty-five years. He started the homework club at the Boys & Girls Club of Camarillo which has grown into the national program known as Power Hour. He is the co-founder & coordinator of the Daniel Pearl Music Festival. He has been the behind-the-scenes support for the Torah School since its inception, tutored students in Hebrew at Temple Ner Ami for several years and has served on the Temple's Board of Directors for too long.

GIL RAMOT returns to us this year as our Hebrew teacher for both children and adults. He is also our co-advisor for the Junior Youth Group. Gil has a Masters of Social Work with experience in at-risk youth, has been a Hillel program director and is a reservist in the Israeli Army. Gil was Ventura County's Shaliach and is also a teacher at Temple Beth Torah in Ventura and Khilat Ha Alonim in Ojai. He is currently working on a conversational Hebrew on-line book "The Joy of Hebrew." Gil is married to Revital and they have an eight-month old baby girl, Healey.

SHARON SPIELMAN returns to us this year as our 5th grade teacher. She holds a Bachelors degree from Rice University and a Masters degree from USC – both in Electrical Engineering. Fortunately, she has also acquired a strong Jewish and Hebrew education from spending most of her (de)formative years (age nine through twenty) in Israel. She can assemble an Uzi in pitch dark in seven seconds, pilot a single-engine airplane, and be ready to sing for High Holidays.

JEFFREY LEE STEINBERG returns to us this year as our Family Educator, Havurah Coordinator, Madrichim Director, a member of the Teen Connection staff and Camp Teen Haverim, as well as

a Judaic Literacy teacher in our Torah School. He is a well-respected Jewish Communal Professional who works with Jewish parents, teens, children, families, and teaching & counseling staffs, creating community and strengthening personal, family, and communal bonds. He specializes in teaching classes and facilitating programs, workshops, and retreats, in which participants identify their own personal values and ethics within a Jewish context, and learn about and make value-based life decisions. Jeffrey Lee has a Masters degree in Jewish Communal Service from Hebrew Union College, a Masters in Social Work from USC, and has over thirty years of hands-on experience working with a variety of Jewish organizations, congregations, and camps. He is also the Director of Experiential Education for the Bureau of Jewish Education of Orange County, the Director of the Madrichim Programs at Temple Beth Hillel in Valley Village & Temple Beth Torah in Ventura, and a Leadership, Social Work, and Family Education Consultant within the larger Jewish community. Jeffrey Lee shares his life with his wife, Halli, and their two children, Shoshanah and Noah, and is grateful for the blessings found in each moment of their lives.

DANIEL VESELAK was one of the founding members of our youth group NAUTY. He was a member of NAUTY's leadership committee and was very active in NFTY. "NFTY was one of the best times of my life," says Daniel, "I still keep in contact with many of the friends I have met, and the experiences I shared at NFTY will last forever." Daniel was also our Junior Youth Group Advisor before leaving and pursuing his B.A. History degree at UCLA. He is currently enrolled at CSUCI where he is pursuing his teaching credential.

JULIA NEWMAN has been the Principal of the Ner Ami Torah School for many years. She has been a teacher and school administrator in the public schools. Julia holds advanced degrees in special education and school administration. She is on the faculty of the School of Education at CSUCI and is an active member in the Ventura County Jewish community as well as the community-at-large.

JOIN TEMPLE NER AMI'S

VISIT TO

ISRAEL

Led by

RABBI MICHAEL LOTKER

MAY 18 – 29, 2011



HIGHLIGHTS

- ◆ 1 Shabbat in Tel Aviv & 1 Shabbat in Jerusalem.
- ◆ Palmach Museum.
- ◆ Independence Hall.
- ◆ Secret underground munitions factory.
- ◆ Tour ancient port of Jaffa.
- ◆ Roam through Caesarea.
- ◆ Zippori – see mosaic 'Mona Lisa of the Galilee'.
- ◆ Walk through Tel Dan where Rabbi Mike excavated!
- ◆ Visit IDF base on Golan Heights (*pending military's authority*).
- ◆ Have a tasting at the Golan Heights Winery.
- ◆ Browse through mystical city of Safed.
- ◆ Tour Old City of Jerusalem – Jewish & Christian Quarters.
- ◆ Tunnel along Kotel (Western Wall).
- ◆ Yad Vashem – Holocaust Museum & Memorial.
- ◆ Dead Sea Area including Masada.
- ◆ Plant a tree sapling in the hills of Jerusalem.
- ◆ Pay respects at Har Herzl – Israel's military cemetery.
- ◆ Ride a camel and have dinner in the "Land of Genesis".

AND MUCH, MUCH MORE!

LAND PACKAGE

Per person sharing a Double Room:

20 – 24 participants: \$2,589
25 – 29 participants: \$2,479
30 – 34 participants: \$2,421
35 – 39 participants: \$2,338
Single Supplement: \$ 875

MEALS

Breakfast daily, 1 Lunch & 7 Dinners

HOTELS

RENAISSANCE HOTEL, TEL AVIV
PASTORAL KFAR BLUM KIBBUTZ GUEST HOUSE, UPPER GALILEE
DAN PANORAMA HOTEL, JERUSALEM

GROUP AIR

EL AL's NON-STOP – LAX / TEL AVIV / LAX

\$1,056.00 per person – economy
\$ 471.69 Fuel and Taxes***

***Applicable taxes and fuel surcharge will be added at the time of ticketing to the above fare.

CONTACT RABBI LOTKER FOR AN APPLICATION

FOR MORE INFORMATION CONTACT



Carole Kracer

CK TRAVEL SERVICES

TOLL FREE: 1.877.784.664

cktravelservices@roadrunner.com

Turn it and Turn it

Message from Student Rabbi Lisa Bock

Another summer over. Another High Holy Days now complete. School has started. Here we go again.

In my neighborhood, I know school has started because I hear the busses on their pick-up route on my street for grade schoolers, middle schoolers, and high schoolers beginning at 6:35 am. I love the quiet that we get in the summer months when the busses don't run!

But there's also something reassuring about the busses, and in the overall cycle of the year, too. School has started – as it should, and as the High Holy Days are “early” in comparison to our Gregorian calendar dates, they are already completed. And as Sukkot ends, we have Simchat Torah, and we begin a new cycle of reading the Torah, from the beginning, again.

“Ben Bag Bag says: Turn it and turn it, for all is in it.” Pirke Avot 5:25

The Torah takes us from Bereshit, creation, to the last verses of Deuteronomy, with the children of Israel standing at the brink of the Promised Land, and Moses dies. Without taking a breath, we finish the last verse and word of the Torah scroll, and begin again with Bereshit.

If you've noticed, there is more to the Hebrew Bible beyond the Five Books of Moses, beyond the Torah. We have Joshua and Samuel I and II, Judges, and Kings I and II, and so on. Later in the Hebrew Bible we have Proverbs and Psalms, Job, Esther and Ruth just to name a few.

But though we continue our cycle of reading Torah from beginning to end to beginning again, we also know that the Hebrew Bible tells of our conquest, and trials and tribulations in the Promised Land. One might ask, why don't we continue to read those stories as well from beginning to end? Why read Torah over and over? Don't we get to read the Hebrew Bible all the way through?

Well, in part, in a way, we do – though not in a beginning to end fashion. It is our tradition to take selections from the middle section of the Hebrew Bible, from the books of the Prophets, and we pair those up with our weekly Torah reading on Shabbat. That is

what we call the Haftarah, meaning conclusion. It is not “half Torah” or “Haftorah”. Our liturgy, our prayer books incorporate verses from the books of the Prophets, Psalms, Proverbs, and we read from the later part of the Hebrew Bible at different times of the year, for example, we traditionally read the Book of Esther on Purim, and the Book of Ruth on Shavuot.



So our tradition places strong emphasis on the reading of Torah, the Five Books of Moses. We read Torah all the way through each year. I think this makes sense because when we read and study Torah, we find our selves in Torah, and we can relate to the all too human stories, and learn from them. Like the children of Israel looking towards the Promised Land, we too search for the Promised Land in a way, striving

to get there, and we never quite cross over. In reading Torah, we stand on the Jordan, look into the Promised Land, and turn back to creation. As I remember once hearing Rabbi Alan Greenbaum say on this subject, “We seem to be perpetually almost-but-not-quite ‘getting there.’” As wanderers in our own path of life, we can find instruction, guidance, reprimands, oftentimes questions, and sometimes solace in Torah, knowing and reminding us that we are sometimes all too human, though it is our instruction to strive to be holy.

Each year that we read the Torah anew, we ourselves are different, a little older, perhaps a little wiser, and we bring our new self to read and study Torah, and we find out something new each year. As it says in Pirke Avot, the Chapters of the Fathers, “Ben Bag Bag says: Turn it and turn it, for all is in it.” He is talking about reading the Torah again and again, because it is as he says, “for all is in it.” We continue the cycle of reading the Torah from beginning to end to beginning, and we find ourselves anew, even as we have changed since the prior year. And perhaps, like the busses in my neighborhood, the cycle of reading Torah from the beginning again is reassuring.

Blessings, Student Rabbi Lisa

IRV DUBIN LIBRARY

The adult section of the Library is now about 98% classified. There is still some last minute tweaking to be done!

- ▶ There are labels on each shelf to indicate the classification of the books on the shelf.
- ▶ On the library cart, there is a binder entitled "JUDAIC CLASSIFICATION INDEX". The index lists all the classification numbers we have in our Library. The index should be helpful to find books of interest until the catalogue cards are typed under "Author", "Title", and "Subject".
- ▶ Books in the Novel/Fiction section are shelved alphabetically by Author.
- ▶ The **Biography Section** is shelved alphabetically by the person honored.
- ▶ Books are shelved alphabetically by Author in each classification section.
- ▶ Remember to sign out when books are borrowed.
- ▶ Return all books to the **Library Cart** for the volunteer to shelve in the proper place.



Library News

by Phylis Mandel



My Grandma Sells Leisure Village



- EXPERIENCED LEISURE VILLAGE REALTOR/HOMEOWNER 10+ YEARS
- HONEST
- PROFESSIONAL
- HELPFUL

Sharron Parker
805-443-1998

Lic.# 0090162





TORAH SCHOOL SUPPORT FUND

Temple Ner Ami has the best Torah school in Ventura County. For the first time in many years we will be funding our Principal's position. Our teachers have their own classrooms for the first time. Our goal is to provide the Principal and teachers with the full financial support they so richly deserve.

The Fashion Show/Lunch was a grand success. It was a Fund Raiser and a "Fun Raiser". Thank you to Jay Crane, who cooked the main dish, Arlene Cohen, who provided the desserts (along with a yummy contribution from Naomi Brill),

and yours truly who did the rolls and salad. Our youth group provided the muscle – moving chairs, tables, setting tables, putting up umbrellas and taking them down...whew – makes me tired to think of it. Kyle Fischler, Danielle Gaynor, the Spitzer Family and the Grossmann Family were wonderful. Our models: Shari Brody, Naomi Brill, Claire Goldstein, Marlene Votion, Phyllis Mandel, and Marcia Zatzkin were elegant...such talent. We all spent a good part of our children's inheritance on goodies and clothes! **We earned almost \$3000 for our Torah School Fund—and had lots of fun doing it.** *Arla Crane*

WISHING YOU A PROSPEROUS 5771 **'MAY YOU BE INSCRIBED** **IN THE BOOK OF LIFE FOR A GOOD YEAR'**

BUT, IN CASE YOU'RE CONCERNED...

- LIFE INSURANCE
- HEALTH INSURANCE
- MEDICARE PLANS & PART D
- DISABILITY INCOME INSURANCE
- LONG-TERM CARE
- FIXED EQUITY-INDEXED ANNUITIES



MARC GROSSMANN
ICON WEST INSURANCE SERVICES
CA LICENSE #0E72400

805-616-2010 OFFICE
818-203-5698 CELL
866-724-7793 FAX
EMAIL: MARC@INSURANCE818.COM
WEB: WWW.INSURANCE818.COM

PROUD MEMBER OF TEMPLE NER AMI

*** A \$50 DONATION WILL BE MADE TO TEMPLE NER AMI FOR EVERY NEW POLICY TAKEN**

Jewish Genealogical Society of the Conejo Valley, Ventura County and Surrounding Areas (JGSCV)

**Come to the October 4, 2010 meeting of the JGSCV
Come Celebrate Our 5th Anniversary**

The JGSCV will hold a general meeting, co-sponsored with Temple Adat Elohim, on Monday, October 4, 2010 at Temple Adat Elohim 2420 E. Hillcrest Drive, Thousand Oaks, 7:00 p.m.-9:00 p.m. **NOTE: Different day of week and time!**

The Topic:

Ost Meets West: Immigrant Film Moguls, Émigré Directors, and the Rise of Film Noir

A group of Eastern European Jews, who headed most major American film studios, founded the Hollywood film industry. Another influx of German/Austrian Jewish film directors were driven to the US by the Nazis in the 1930s. A number of them, such as Fritz Lang, Billy Wilder, Otto Preminger, and Edward G. Ulmer would play a determining role in the rise of what was later called "film noir". * The speaker will examine the ethnic origins of the two groups and how their different backgrounds enabled their considerable contributions to the cinema, and in particular "film noir".

Speaker: Vincent Brook has a Ph.D. in film and television from UCLA and teaches media studies at

UCLA, USC, Cal-State LA, and Pierce College. He is the author of *Something Ain't Kosher Here: The Rise of the "Jewish" Sitcom* and dozens of journal articles, essays, and reviews. Brook's book, "Driven to Darkness: Jewish Émigré Directors and the Rise of Film Noir" will be available for purchase for \$20. Please bring cash or check to purchase the book.

* **Film noir** is a cinematic term used primarily to describe stylish Hollywood crime dramas, particularly those that emphasize cynical attitudes and sexual motivations. Hollywood's classic film noir period is generally regarded as stretching from the early 1940s to the late 1950s. Film noir of this era is associated with a low-key black-and-white visual style that has roots in German Expressionist cinematography.

The Jewish Genealogical Society of the Conejo Valley and Ventura County is dedicated to sharing genealogical information, techniques and research tools with anyone interested in Jewish genealogy and family history.

There is no charge to attend the meeting. Anyone may join JGSCV. Annual dues are \$25 for an individual and \$30 for a family.

Attention Teens & Young Adults!

Have you been on the Birthright Program to Israel? If so, please contact Julia Newman at the Temple, at 388-3824 or via eMail at: educator@nerami.org

Darleen Hurbace
Owner, Esthetician

(805) 386-3000

Darleen's Professional Skin Care Clinic

**This Month's Special:
30 Minute Facial
Just \$35**

3379 Somis Road, Suites A & C
PO Box 369
Somis, California 93006 USA

Rated 5 Star
FUTURESSSE By BIODROGA

In Focus Photography and Video



~BAR/BAT MITZVAH

~PORTRAITURE

~WEDDINGS

Kenneth Bohr
(805) 558-4048
www.infocusphotographyandvideo.com
info@infocusphotographyandvideo.com

In Focus Photography And Video
(805) 558-4048
www.infocusphotographyandvideo.com





OCTOBER ANNIVERSARIES

Richard Levine & Anita Carswell	Saturday	October 2, 2010	8th anniversary
Howard & Janice Wise	Saturday	October 2, 2010	16th anniversary
Jeff & Susan Weinstein	Sunday	October 3, 2010	19th anniversary
Andrew Greenberg & Karin Holt	Wednesday	October 6, 2010	8th anniversary
Peter & Amy Jamieson	Wednesday	October 6, 2010	10th anniversary
Arthur & Fran Titen	Wednesday	October 6, 2010	54th anniversary
Stanley & Loretta Reshes	Monday	October 11, 2010	57th anniversary
Michael & Cassandra Posner	Tuesday	October 12, 2010	19th anniversary
Rene & Kathy D'Inca	Friday	October 15, 2010	16th anniversary
William & Claire Goldstein	Friday	October 15, 2010	60th anniversary
Darryl Sobelman & Carole Warren	Sunday	October 17, 2010	6th anniversary
Gilbert R. & Rita D. Cooperman	Thursday	October 21, 2010	60th anniversary
Alex & Alyse Borla	Tuesday	October 26, 2010	30th anniversary

** This table is based on Temple records. If your information is missing or in error, please contact the Temple office.*

**Comfort Keepers —
Caregiving at its Best in the
Comfort of Your Own Home**



- ♥ In-Home Companionship Care
- ♥ Transportation (Doctor, etc.)
- ♥ Meal Preparation
- ♥ Light Housekeeping
- ♥ Shopping & Errands
- ♥ Accident Prevention
- ♥ Personal Care Assistance
- ♥ Walking Assistance
- ♥ \$25 off coupon for Temple Ner Ami members
- ♥ Was ranked #1 in the senior care industry!


OUR LOVING CAREGIVERS ARE FULLY SCREENED, BONDED AND INSURED. Over 600 Offices Worldwide

www.comfortkeepers.com

For a Free In-Home Consultation
Call 805-389-4600



Bruce Hochstadter, CPCU, LUTCF
Hochstadter Insurance Agency



FARMERS

3623 Old Conejo Rd. #204
Newbury Park, CA 91320
Bus: 805-529-1198 License #0694215
Fax: 805-529-1197

Strong Foundation Tutoring
Creating Strong Foundations for the Future!

*One-on-One
in Home Tutoring*



(888) 313-6425
StrongFoundationTutoring.com
Daniel@StrongFoundationTutoring.com

Your Soul Journey

Are you looking for balance and spiritual connection?

Interested in learning about ancient writings and Jewish tools for living?

Mussar provides a powerful system for personal and spiritual growth. An ancient set of Jewish tools for living, Mussar is also a growing modern practice. Mussar takes Jewish ethics from study into practice and opens the way towards inner balance and spiritual connection. A Season of Mussar gives us the opportunity to develop our own souls' journey in a way that is both modern and ancient.

If you are interested in developing your soul journey and learning about ancient Jewish tools for living, enroll in "A Season of Mussar"!

"A Season of Mussar"

Our Thursday evening *mussar* group is a great way to begin your journey. We will discover and work on our own soul journeys through study, contemplation, learning with a partner, discussion and other exercises. No prior experience in *mussar* or Judaism is necessary. It is not necessary to be Jewish to participate in Mussar. Groups meet every other week, for approximately 13 weeks.

Thursday evenings, 7:00-8:30 p.m.
10/14, 10/28, 11/11, 12/2, 12/16, 1/13, 1/27
With Student Rabbi Lisa Bock

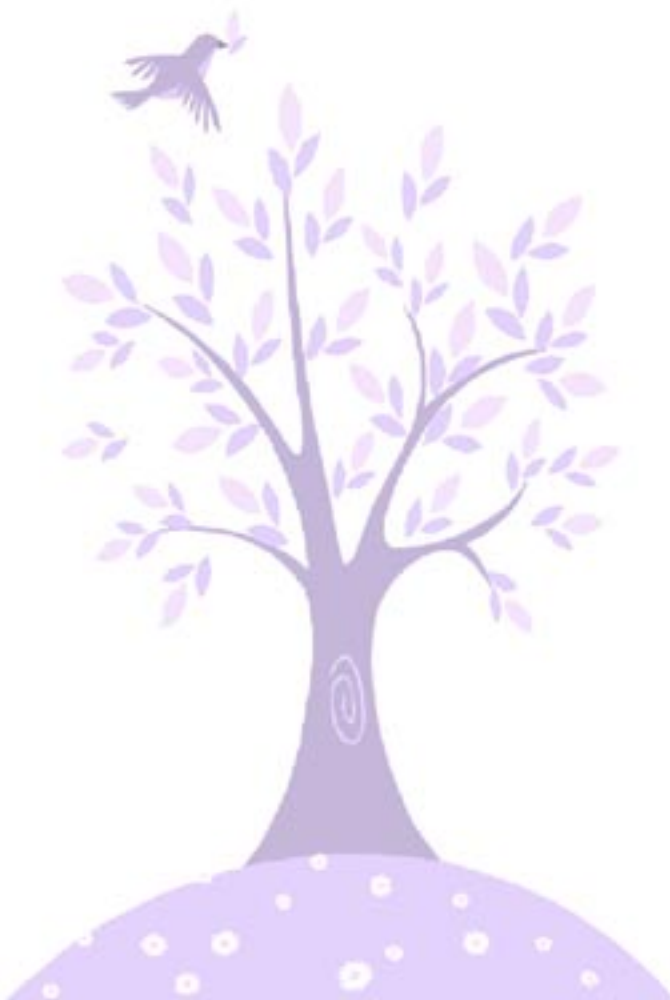
Mussar group leaders are trained by The Mussar Institute.
For more information on the practice of *Mussar*.

www.mussarinstitute.org.

For more information and to register:

studentrabbilisabock@nerami.org

There is a \$100 fee for temple members, and \$125 for those who are not members of Temple Ner Ami. Limited funds for scholarships are available. *Registration is required*, as materials are sent in advance of the group meetings.



Tired of Being in Bumper-to-Bumper Traffic?



Having Nightmares about going to the Mall?

Temple Ner Ami to the Rescue!

Join Us for Affordable Holiday Shopping!
Bring Your Family, Friends, and Neighbors.
Buy that Perfect Gift for Grandma or Little Ashley.
Meet our Vendors and Find that "Homespun" Gift.

TEMPLE NER AMI's

**HOLIDAY
BOUTIQUE**



Sunday, October 17th

2:30 pm to 6 pm

FREE Entertainment for the Entire Family

Questions? Call the Temple at (805) 388-3824

Proceeds benefit the Torah School Fund
& the Temple Music Fund.

The Temple Gratefully Acknowledges the Following Contributions

TEMPLE GENERAL FUND

FROM

In Memory of Herbert Lippe and in Honor of Sylvia Lippe.....	Marilyn Goldsmith & Rob Kirechbaum
In Support of the Temple.....	Ron & Sarene Wallace
In Support of the Temple.....	Max Heller
In Support of the Temple.....	Harriet Lit
In Support of the Temple.....	Seth & Charlotte Brandes
In Support of the Temple.....	Saul Lessler & Julia Newman
In Loving Memory of husband Steve Brodie.....	Gloria Brodie
In Support of the Temple.....	Gregg & Sharon Hartman
In Support of the Temple.....	Anita Levine
In Support of the Temple.....	Marvin & Carol Short
In Support of the Temple.....	Jack & Terri Milner
In Support of the Temple.....	Stephanie Goldie
In Support of the Temple.....	Robert & Kathy Sacks
In Support of the Temple.....	Stephen & Karen Kerper
In Support of the Temple.....	Christopher & Jennifer Brown
In Support of the Temple.....	Stephen & Hilary De Cesari
In Support of the Temple.....	Michael & Pam Veselak
In Support of the Temple.....	Bernice Epstein
In Support of the Temple.....	Larry & Celia Teitell
In Support of the Temple.....	Ida Zeller
In Support of the Temple.....	Richard Erlich
In Support of the Temple.....	Lina Edwards
In Support of the Temple.....	Muriel Rosenkranz
In Loving Memory of her Beloved Husband Jerome Berenson.....	Carolyn Berenson
In Support of the Temple.....	Irving & Arlene Bergman
In Support of the Temple.....	Madelyn Miller

RABBI'S DISCRETIONARY FUND

FROM

In Support of the Temple.....	Sheila Bachelis
In Support of the Temple.....	Sheila Levin
In Support of the Temple.....	Michael Fontaine

JAFFE LIBRARY FUND

FROM

In Support of the Temple Library.....	Reva Kern
---------------------------------------	-----------

MUSIC FUND

FROM

In Loving Memory of her Mother, Sarah Mauger.....	Charlotte Kreitzer
---	--------------------

NEWMAN SCHOLARSHIP FUND

FROM

In Support of our Torah School Students.....	Kirby & Beth Yale
In Support of our Torah School Students.....	Della Carmona
In Support of our Torah School Students.....	Allan Levy
In Support of our Torah School Students.....	Lina Edwards
In Support of our Torah School Students.....	Shlomo & Charlotte Kreitzer

TORAH SCHOOL SUPPORT FUND

FROM

In Support of our Torah School Students.....	Melvin & Frances Kuznets
In Support of our Torah School Students.....	Darryl Sobelman & Carole Warren
In Support of our Torah School Students.....	Jack & Marlene Votion
In Support of our Torah School Students.....	Frances Yasney
In Support of our Torah School Students.....	Dr. & Mrs. Albert Abrams
In Support of the Torah School Students.....	Jay & Arla Crane

TEMPLE NER AMI

Yahrzeits - September 2010

Friday, October 1, 2010

Fanny Reinstein.....grandmother of Rabbi Michael Lotker
Jerry Doctrow.....husband of Flo Doctrow
Ruth Levy.....mother of Arlene Bergman
Julia Biddelman.....mother of Phyllis Slade

Friday, October 8, 2010

Claire Reisner.....sister of Flo Budoff
Annette Rubinson..... sister of Charlotte Markus
Edith Schallheim.....wife of Paul Schallheim
Steve Sitko.....father of Steve Sitko
Olive Robinson.....mother of Kate Robinson
Emma Goldberg.....mother of Mildred Seidler
Paul Cohen.....brother of Roberta Jacobs
Grace Epstein.....mother of Phyllis Wechsler
Dr. Joseph Herszkorn.....father of Dr. Ed Hawthorne
Amin Marxouk.....brother of Susan Saleh

Friday, October 15, 2010

Phil Goodman.....father of Ellen Brand
Sylvia Lackman.....sister-in-law of Gloria Brodie
Pauline Beg**.....mother of Fred Beg
Myron Stein.....husband of Renee Stein
Natalie Brody.....mother of Irene Olson
Dr. Hugh Frank.....husband of Barbara Frank
Lou Gompers.....father of Frieda Davenport
Milton Krieger.....father of Judy Krieger
Anne Hellerman.....grandmother of Gary Burke
Gottlieb Schowenwald.....father of Ira Schowenwald
Walter Simpson.....father of Karen Weiss
Jennie Tenenbaum mother of Muriel Rosenkranz
Joseph Burke.....father of Gary Burke
Eda Herszkorn.....mother of Dr. Ed Hawthorne

Friday, October 15, 2010 (Continued)

Sidney Lyons.....cousin of Violet Coshever
Edwin Stallman.....husband of Betty Stallman
Harry Gan.....father-in-law of Ida Gan
Irving Yasney**.....husband of Frances Yasney
Jack Votion, Sr.father of Jack W. Votion

Friday, October 22, 2010

Bella Dektor.....grandmother of Dalya Dektor
Eva Levene.....mother of Helen Gardner
Dorothy Faber.....mother of Alyse Borla
Emma Beacher.....mother of Libby Pierce
Paul Friedman.....father of Vicki Sharp
Ben Kovach.....father of Fred Kovach
Hank Perlman.....husband of Sheryl Rudie
Sidney Santer.....father of Andrew Santer

Friday, October 29, 2010

Kitty Copeland.....mother of Sandra Goodwin
Rose Jaffe.....mother-in-law of Elaine Jaffe
Maria Ettenberg.....mother of Joseph Ettenberg
Zhanna Aller.....mother of Mariana Krastein
Dodi Nussbaum.....grandmother of Danalynn Pritz
James J. Jacobson.....father of Shari Brody
Sam Adler.....husband of Ruth Adler
Meyer Schultz.....father of Leo A. Schultz
Flora Warren.....mother of Carole Warren
Louise Zusman.....grandmother of Louise Zusman
Tillie Shack Teck.....mother of Leatrice Posner
Henry Copeland.....father of Sandra Goodwin
Beatrice Gottfurcht.....mother of Marilyn Seiden
Gerald Goldman.....brother of Bernard Goldman
Marion Zatzkin-Dryer.....mother of Allen Zatzkin

* Deceased Member

** Name on the Yolanda Cramer Memorial *Yahrzeit* Board

The Temple's *Yahrzeit* Board has spaces available for remembering loved ones who have passed away. The requested donation for memorial plaques on the *Yahrzeit* Board is \$350.00 per plaque.

What in the World

...Am I Praying?

It is wonderful to be able to say the prayers...

But have you wanted to know really, what are you saying?

If you ask this question, this class is for you!

Join us in exploring prayers and blessings such as:

Sh'ma

Modeh/Modah Ani

Bar'chu

Avot v'Imahot

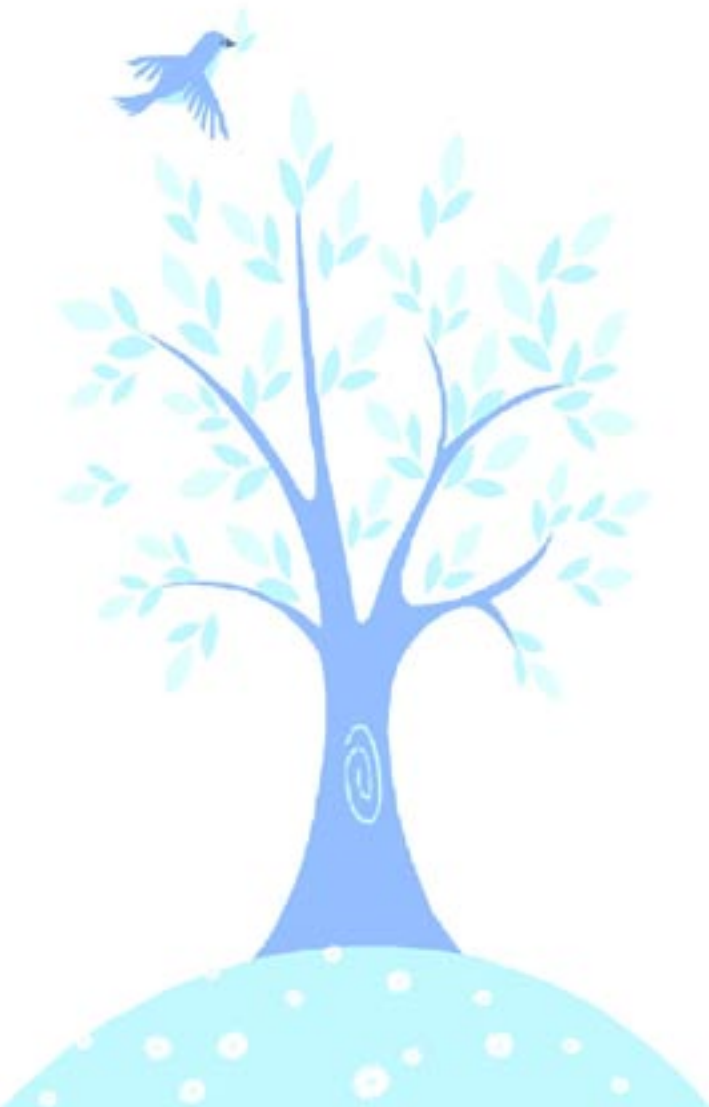
G'vurot

This 3 session exploration will take place on Wednesday evenings, 7:00 to 9:00 pm at Temple Ner Ami, led by Student Rabbi Lisa Bock.

Class components will include reading and the meanings of each of the prayers.

Dates: October 6th, 20th, and 27th

- Materials will be provided. Knowledge of Hebrew letters is helpful but not required.
- Please register with the Temple office by Monday October 4th so we may prepare materials for you. Call (805) 388-3824.
- A suggested donation to Temple Ner Ami for the class is \$10 for members, \$20 for non-members.





Sisterhood News

Message from Sonia Lotker

Dear “Sisters”,

As you may have already heard Shari Brody and I will be your Sisterhood Co-Presidents (Shari is on vacation, that’s my niece with me in the picture). We are both looking forward to making this year both exciting, and productive.

Please help us achieve this goal. Let your friends know about our temple’s Sisterhood. Our goal is to become 100 women strong. We will need each one of you to help us make 2010-2011 a year to remember.

Please remember to put **October 17** on your calendar for our **Holiday Boutique**. The boutique will start at 12:30pm for set up and will run till 6 pm. The Sisterhood will be supporting the **Torah School Support Fund**, and the **Choir** - for this event.

Shari and I are looking forward to seeing all of you at our next meeting on **Wednesday, November 3rd** at 7 pm. You are invited to join us for a very special sisterhood evening- **Rosh Chodesh and Re-energizing Ourselves: A Celebration of the New Month** led by Student Rabbi Lisa.

TEMPLE NER AMI COMMITTEES

Annual Giving Committee

Saul Lessler-Chair,
Marc Grossmann-Vice Chair

Art Committee

Sharon Spielman & Rose Siela,
Co-Chairs

Personnel Committee

Gary Goltz, Chairman

Finances Committee

Saul Lessler, Chair

Membership Committee

Arla Crane - Chair.
Members: Steve Moore, Shari Brody, Lisa Bock, Dale Jacobs, Harriet Lit

Education Committee

Ann Sookikian-Chair,
Gary Lieb-Vice Chair.

Tikkun Olam Committee

Joan Stone & Harriet Lit, Co-Chairs.
Members: Chana Kreizer, Pam Bogen,
Steve Graff

Nominating Committee

Shari Brody - Chair

Fundraising

Larry Kleinman - Chair

Dues Committee

Lew Stone - Chair

Programming Committee

Larry Kleinman ,Chair Members:
Nadine Frankel, Dale Jacobs, Ann Burke

Publicity and Public Relations Committee

Marc Grossmann - Chair

Religious Practices Committee

Steve Moore, Peter Jamieson, Jean Shev

Temple Ner Ami Photo Fundraiser

November 1st & 3rd from 4:00 P.M.-7:00P.M. at Temple Ner Ami. Get your family pictures and kids pictures taken with In Focus Photography and Video at the temple and raise money for the Hebrew School. For \$25.00 you will receive an 8x10 portrait taken at the temple and mailed out to you within 2 weeks. Most of the proceeds goes straight to the temple.



The Gift Shop Found a Donor!

The new Temple does not have the floor space available for the long display cases our gift shop used previously. While we have been operating the gift shop from a small case in Kaila's office, a larger case will allow us to display many larger items.

Marc, Donna, and Sandra Goodwin contributed \$500 in loving memory of Robert Alex Goodwin, so the Temple could purchase the much needed larger display case.

The generosity of the Goodwin family will be recognized with a plaque on the display case. It is expected to arrive at the Temple the first week in October. New items to go in the case are arriving! If you have any questions regarding purchasing items in the gift shop, please contact Claire Goldstein at (805) 987-8411.



**Daniel
Newman
Lessler**



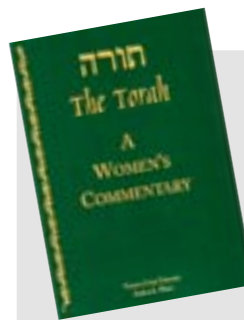
PIANO

Performer/Teacher/Composer

dlessler@usc.edu

Home: 805-386-3730

Mobile: 805-407-5855



Torah Study: The Women's Perspective

Join us from Noon-1:00 pm Wednesdays
– bring your lunch, and we'll shine light on
Torah from the women's perspective!

Using *Torah: A Women's Commentary* by Tamara Cohn Eskenazi and Andrea L. Weiss, we'll study the text together. Ner Ami has a just a few copies of this book, so if you have your own copy, feel free to bring it.

Our discussions will be led by Student Rabbi Lisa Bock. All are welcome.

We look forward to seeing you!

For generations, the task of interpreting the texts of Torah has been almost exclusively the province of men. In our generation, this has changed and the voices of women and their understandings of the Torah have enriched our people. This commentary will be a valuable addition to every synagogue, Torah study group, and Jewish home." -- Rabbi David Ellenson, President Hebrew Union College.

By The Book
Small Business Management
Accounting/Administrative Services

Kaila Kaden
General Manager

(805) 490-9236
(805) 388-5447 fax
mccnmatdon1957@aol.com

The Succah is Ready!

Once again our Succah is in place. This time it was very special. It was a family affair...participants included those who were age six to those who were seventy nine, with many in the middle. Each person had a role to play.

Sharon Spielman, along with Clarice Shapiro, helped our boys and girls create wonderful decorations. Veteran builders, John Kerwein and Jay Crane helped newcomers learn how to put all those boards together with the right sized bolts in the right places on the board...or if they didn't quite line up -- a new hole was created in "Just the right place". We now fondly call our Succah the "Temple Ner Ami Swiss Cheese Succah", with lots of extra holes for viewing the sky! The awesome Succah

Building Team included: Kyle Fischler, Christina and Joe Taylor, Arla and Jay Crane, Shlomo Kreitzer (with moral support from Chana) Dan Harris (and Harris kiddos as well) Jay Lee Steinberg and Mattie (with Noah and Shoshana). Best of all it was necessary to make only one emergency trip to the hardware store and NO trips to the ER...a record for sure! The Team drank a gallon of orange juice and many cookies and goodies for energy during the afternoon.

Gone are the days when one or two people struggled to erect our Succah - We now have the MEGA Succah Team...with young and young in spirit folks doing great work.

Bravo Temple Ner Ami!



BEACH PARTY

It's Our First Event, So Come Join Us!

NAUTY & VCTRY

Saturday, September 25

12:00 - 4:00

(Meet at Ner Ami at 12:00 to carpool or Marina Park at 12:30)

OCTOBER BIRTHDAYS

Flo Doctrow	Friday	October 1	Gerald Rosen	Monday	October 18
Diane Honick	Friday	October 1	Steve Sitko	Monday	October 18
Raja Desenberg	Saturday	October 2	Charles Pierce	Tuesday	October 19
Peter Jamieson	Saturday	October 2	Robert M. Brown	Thursday	October 21
Tim Mascot	Monday	October 4	Gregory Krastein	Thursday	October 21
Sheila Richards	Monday	October 4	Saul Lessler	Thursday	October 21
Jessica Budin-Caloroso	Wednesday	October 6	Pamela Weinstock	Thursday	October 21
Sol Brejensky	Thursday	October 7	Phyllis Mandel	Saturday	October 23
Max Freifield	Saturday	October 9	Marc Wolfsohn	Sunday	October 24
Bess Cohen	Sunday	October 10	William Hatton	Tuesday	October 26
Sharon Spielman	Sunday	October 10	Gary Goltz	Wednesday	October 27
Lynne West	Sunday	October 10	Robert Moskowitz	Wednesday	October 27
Della Carmona	Tuesday	October 12	Gary Burke	Friday	October 29
Frank Seiden	Thursday	October 14	Robert Weinstock	Saturday	October 30
Fran Titen	Friday	October 15	Anne Levin-Sookikian	Sunday	October 31
Dale Jacobs	Sunday	October 17			

** This table is based on Temple records. If your information is missing or in error, please contact the Temple office.*

Campus Interfaith's Third Annual "Feast of Faiths"

On Sunday, October 17th, the Islamic Center of Conejo Valley (ICCV) will host Ventura County Interfaith Community's (VCIC) and Campus Interfaith's third annual "Feast of Faiths." You are invited to join us from 4:00 - 6:00 PM for a vegetarian, kosher and halal style dinner. At this exciting event, you will enjoy table conversation with members of a variety of faith traditions. Shortly following the event, ICCV will make its sunset call to prayer. Muslim calls to prayer are both moving and beautiful and Imam Patel has

graciously invited dinner participants so inclined to stay and hear the call and to observe the prayer. The ICCV is located at 2700 Borchard Road in Newbury Park. Tickets are \$20 if ordered by October 10th and \$25 at the door. Students may attend for \$10 if paid for by October 10th and \$15 at the door. To order tickets, send a check to VCIC, 3482 Barca Street, Camarillo, CA 93010. Checks should be payable to Campus Interfaith. For more information, email Teri Helton at teri@terihelton.com or call 805-482-0313.



Membership News Arla Crane, Membership Chair

Our Temple Ner Ami Family is growing. We now have **201 member families**, and more people are joining us daily. Our membership committee, (Steve Moore, Dale Jacobs, Shari Brody, Harriet Lit, Lisa Bock, and yours truly) has done an awesome job. We want to thank the



Board, our great Presidents, (Dan Harris, Sarene Wallace, and Nadine Frankel) Rabbi Lotker, Student Rabbi Lisa Bock, and all who came to our Open House. The program was a grand success. Let's keep up the good work. Our membership goal is 300 families.

We're on our way. Tell a friend. Temple Ner Ami is a friendly place to call home!

TORAH SCHOOL SESSIONS & EVENTS

OCTOBER

1	Simchat Torah + Consecration of New Students
2	Bar Mitzvah <i>Evan Spitzer</i>
4	Regular session
6	Regular session
9	Bar Mitzvah <i>Garrett Erickson</i>
8-10	Middle School Shabbaton (Retreat at Camp JCA Shalom)
11	Regular session
13	Regular session
18	Regular session
20	Regular session
22	Tot Shabbat Dinner & Program (5:45-7:15)
23	B'not Mitzvah <i>Hayley and Lindsay Greenblatt</i>
25	Regular session
27	Regular session
30	B'nai Mitzvah Family Education (Saturday – 9:30-12:30)

NOVEMBER

1	Regular session
3	Regular session
8	Regular session
10	Regular session
12	Family Shabbat Service led by the 7th Grade (Dinner)
13	Parents-Night-Out (6:00-10:00)
15	Regular session
17	JOLT – Visit to Candle Factory
20	B'nai Mitzvah Family Education (Saturday – 9:30-12:30)
22	Regular session Junior Youth Group 6:15 -7:30
24	NO SCHOOL – Thanksgiving Holiday
26	Tot Shabbat Dinner and Family Program (5:45-7:15) College Students Shabbat
29	Regular session

Teen Connection Calendar 2010 - 2011

- **NAUTY - 1st & 3rd Mondays 6:30-8:30**
Weekend social activities to be announced
- **Place of Our Own - 2nd & 4th Wednesdays 6:30 – 8:30**
- **Teen Talk - Monthly Sunday evenings 11th & 12th Grade**
- **Confirmation - Spring 2011**

SEPTEMBER

Mon	6	NO SESSION – Labor Day
Wed	15	Place of Our Own
Sun	19	SUKKAH BUILDING PARTY
Mon	20	NAUTY
Sat	25	Beach Party
Wed	29	Place of Our Own

OCTOBER

Fri-Sun	1-3	NFTY LTI
Mon	4	NAUTY
Wed	13	Place of Our Own
Mon	18	NAUTY
Wed	27	Place of Our Own

NOVEMBER

Mon	1	NAUTY
Wed	10	Place of Our Own
Sat	13	Parents-Night-Out (6:00-10:00) **Need help with babysitting
Mon	15	NAUTY
Wed	24	NO SESSION – Thanksgiving
Fri	26	College Students Shabbat
Mon	29	NAUTY

DECEMBER

Fri	3	Hanukah Shabbat
Mon	6	NAUTY
Fri-Sun	10-13	FALL KALLAH (Retreat)
Wed	15	Place of Our Own
Dec. 20 – Jan. 4 – <i>WINTER VACATION</i>		

TEMPLE NER AMI - October 2010

Sun	Mon	Tue	Wed	Thu	Fri	Sat
26 9:30am - City of Hope 4:15pm - Torah School	27	28	29 12pm - Torah-Woman's 4:15pm - Torah School	30 Cantor's Bar Mitzvah 12:30pm - Lunch N'	1 Simchat Torah + 7:30pm - Shabbat	2 9:30am - Torah Studv 3:30pm - Evan Soitzer
3 5pm - Children's	4 4:15pm - Torah School	5	6 12pm - Torah-Woman's 4:15pm - Torah School 7pm - What Am I	7 10am - ORT Board 12:30pm - Lunch N'	8 4th-8th Grade Shabbaton (Retreat at Camp) 7:30pm - Shabbat	9 9:30am - Torah Studv 10am - Garrett
10 4th-8th Grade 12pm - Bus Returns	11 4:15pm - Torah School	12	13 12pm - Torah-Woman's 4:15pm - Torah School 7pm - Board of	14 12:30pm - Lunch N' 7pm - A Season of	15 7:30pm - Shabbat	16 9:30am - Torah Studv
17 2pm - Hanukkah	18 4:15pm - Torah School	19	20 12pm - Torah-Woman's 4:15pm - Torah School 7pm - What Am I	21 12:30pm - Lunch N'	22 5:45pm - Tot Shabbat 7:30pm - Shabbat	23 9:30am - Torah Study
24 9:30am - City of Hope 4:15pm - Torah School	25	26	27 12pm - Torah-Woman's 4:15pm - Torah School 7pm - What Am I	28 12pm - ORT General 12:30pm - Lunch N' 7pm - A Season of	29 6pm - Wine & Cheese 7:30pm - Shabbat	30 9:30am - B'nai Mitzvah 9:30am - Torah Studv 6:30pm - MOVIE NIGHT
31 4:15pm - Torah School	1	2	3 12pm - Torah-Woman's 4:15pm - Torah School	4 10am - ORT Board 12:30pm - Lunch N'	5 10am - ORT Board 7:30pm - Shabbat	6 9:30am - Torah Studv

For the Latest Calendar info and details on each event visit www.TempleNerAmi.org

October Outside Organizational Meetings



CITY OF HOPE - GENERAL MEETING

Monday, October 13, 2010 - 12:30 PM
Donald Seidler - 805-987-0917 - President

CITY OF HOPE - BOARD MEETING

Monday, Sept. 25, 2010 - 9:30 AM
Donald Seidler - 805-987-0917 - President

HADASSAH GENERAL MEETING

Now meeting at "The Center for Spiritual Living"
Natalie Rosen - Co-President 805-484-3523
Judy Meisels - Co-President 805-482-9222

ORT BOARD MEETING

Thursday, October 7, 2010 - 10am
Annelies Regen - 805-445-9722

ORT GENERAL MEETING

Thursday, October 28th, 2010 - 12:00 pm
Annelies Regen - 805-445-9722

NARCOTICS ANONYMOUS

Tues-Wed 7-8:15 pm,
Sat. 6:30-7:30 pm,
Sunday 7-8 am, 7-8:15 pm



Jewish Families of Camarillo, Inc.
515 Temple Ave.
Camarillo, CA 93010

NON-PROFIT
ORGANIZATION
U. S. POSTAGE PAID
OXNARD, CA 93030
PERMIT NO. 195

CHANGE SERVICE REQUESTED



TEMPLE NER AMI Appreciates Your Continued Support!

If you would like to make a contribution, the following funds are available. Donations are graciously accepted. The Temple's appreciation of your donation will be published in the following month's issue of the **MEGILLAH**:

- _____ Temple General Fund
- _____ Temple Building Fund
- _____ Newman Scholarship Fund
- _____ Torah School Principal's Chair
- _____ Irv Dubin Teen Scholarship Fund
- _____ Rabbi's Discretionary Fund
- _____ Temple Music Fund
- _____ Art Fund
- _____ Sigmund Jaffe Memorial Library Fund
- _____ Temple Prayer Book Fund

The **MEGILLAH** is published monthly for members of **TEMPLE NER AMI**. Complimentary copies are available by contacting the Temple Office.

Suggested donation for non-members is \$36.00 per year. Make your check payable to Temple Ner Ami.

For information Call 805-388-3824, or eMail your request to:
admin@templenerami.org

Submission date for all material:
12th of each month

In Honor of: _____

In Loving Memory of: _____

From: _____